

Poster Session

If the participant cannot make presentation online/onsite, he or she could prepare a poster for academic communication during the conference. Posters are required to be condensed and attractive.

Poster Orientation and Size

A typical academic poster should have a two, three or four-column layout with variations.

- Poster in landscape format.

Include a header with three or four columns depend on the demands.

- Poster in portrait format.

Include a header with two columns.

Poster should be submitted by instructions below:

- 1) Pdf document with the name: Paper ID + paper title. pdf
- 2) The document size should be less than 5MB
- 3) Send poster to: ieee.icse@gmail.com

Examples

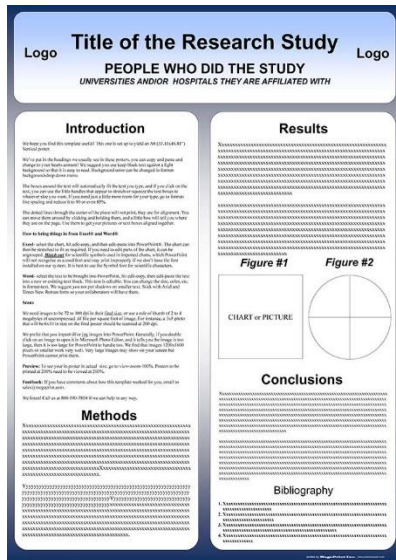


Fig.1 Poster in portrait format

- poster in portrait format: 36" wide x 48" high (91.44 x 121.92 cm) (Fig.1)
- poster in landscape format: 48" wide x 36" high (121.92 x 91.44 cm) (Fig.2)

- the size can be scaled down if necessary

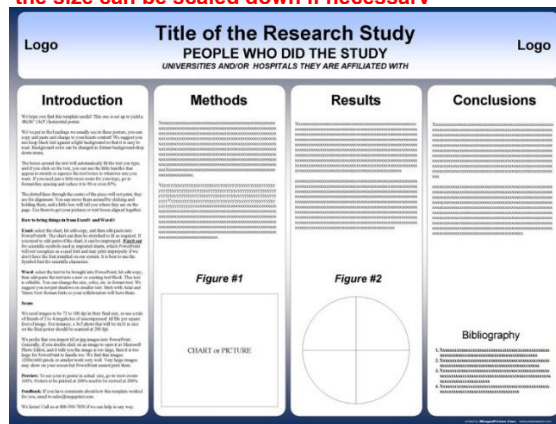


Fig.2 Poster in landscape format

PowerPoint Tips: Page Setup

1. Open PowerPoint and choose a 'blank' slide.
2. On the navigation bar, bring the "Design" ribbon to the forward. (Fig.3)

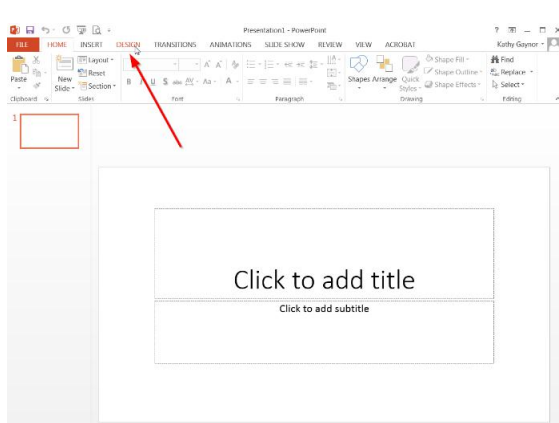


Fig.3

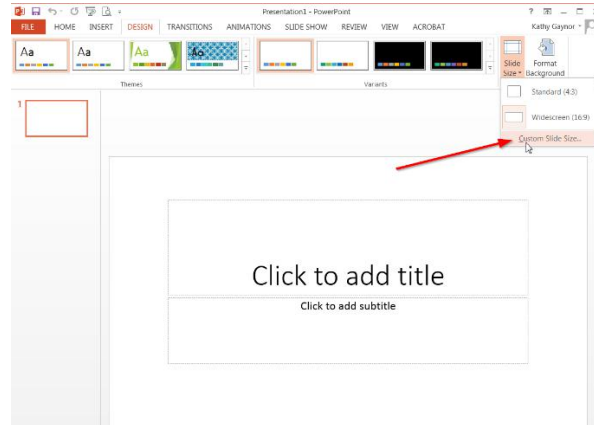


Fig.4

3. Choose "Slide Size" and select "Custom Slide Size". (Fig.4)
4. In the Slide Size dialogue window, enter in the size of the poster: eg. 48" wide and 36" high. (Fig. 5)
5. Begin the design process and add content to your poster.

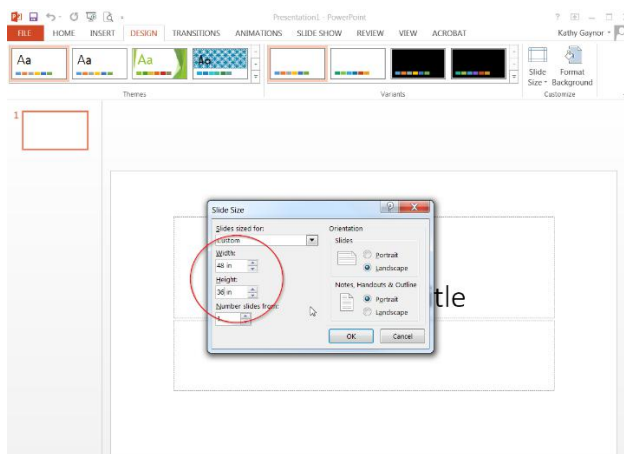


Fig.5

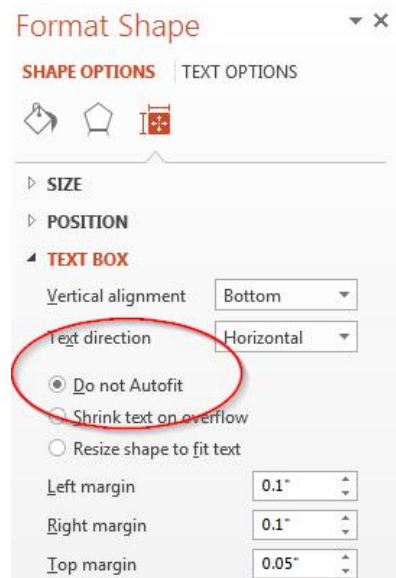


Fig.6

* How to prevent text boxes from auto-sizing

When adding text boxes to your slide, entering text can change the shape of the box. To fix this: Right click (or Ctrl+click) on the text box, choose "Format Shape", "Text Options", "Text Box", and select "Do not Autofit". (Fig.6)

